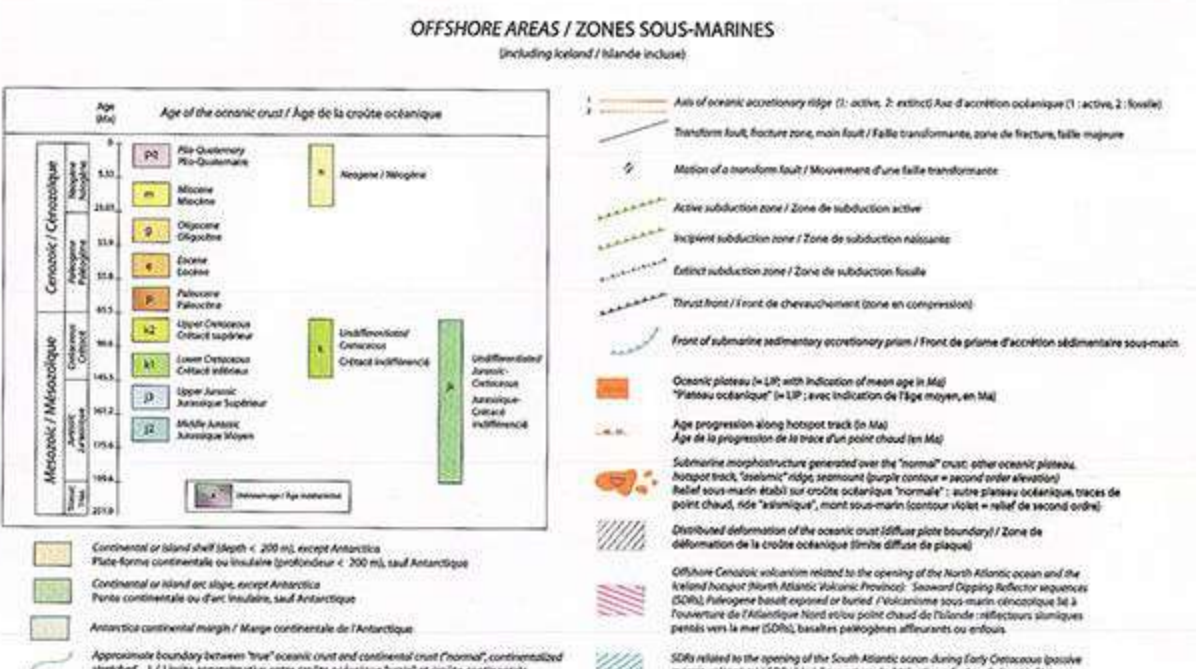
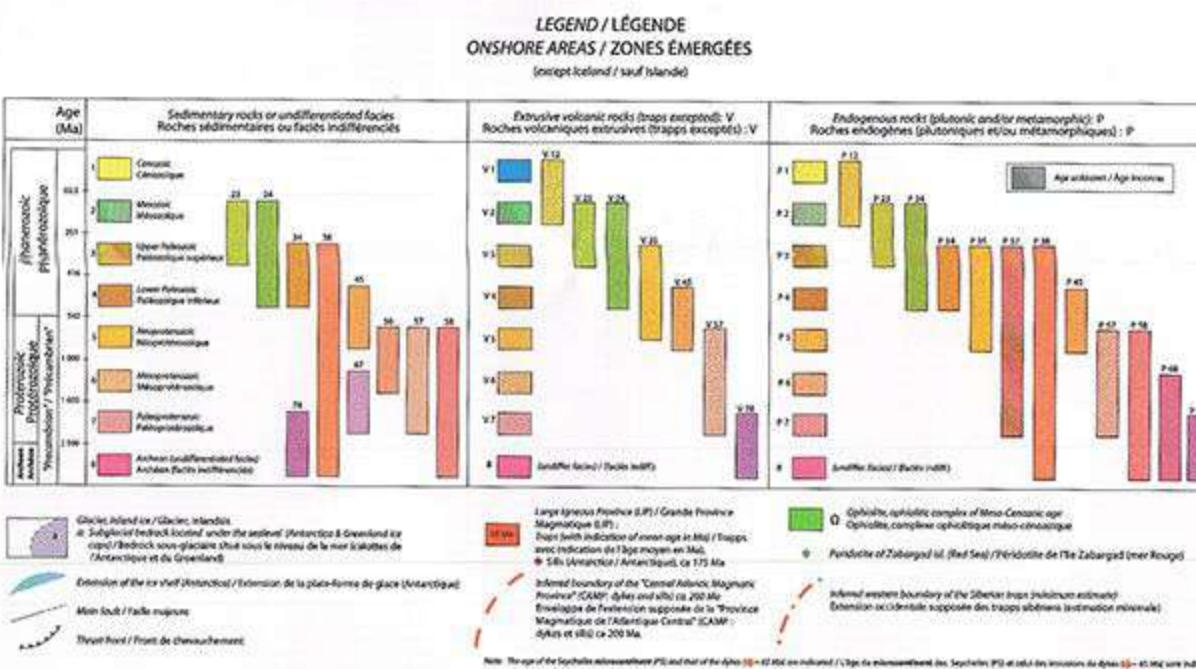


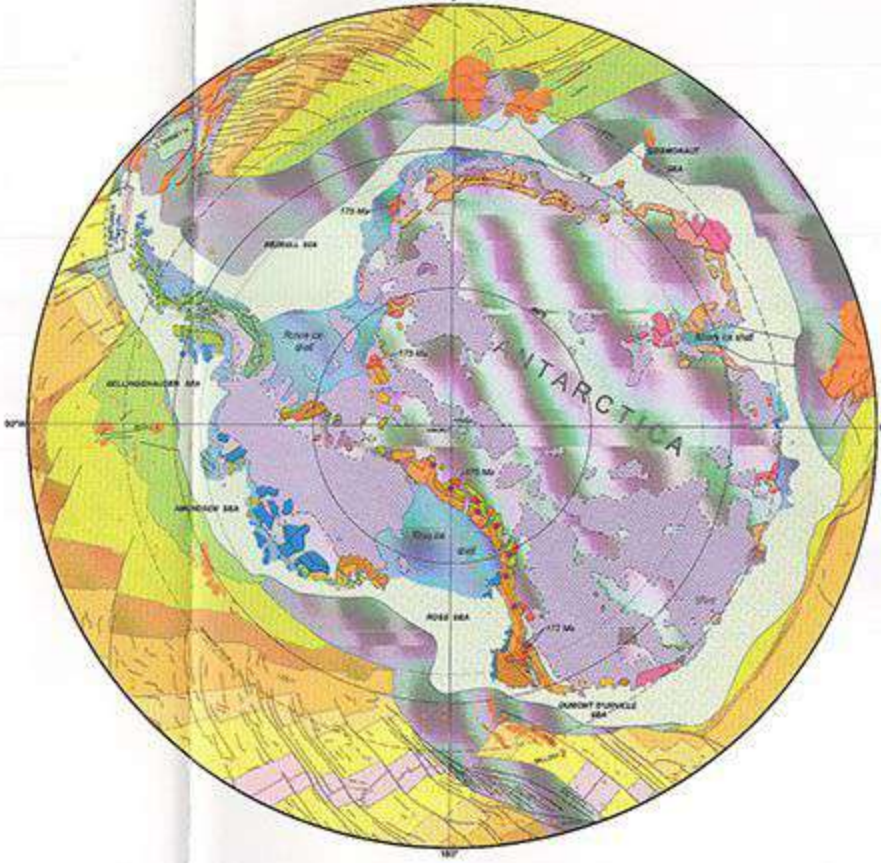
The dotted circle line corresponds to the northern boundary (72° N) of the main map in Mercator projection. The circle in pointillé correspond à la limite nord (72° N) de la carte principale, en projection Mercator.



Chronostratigraphic ages of the oceanic crust interpolated from digital files by Müller & Li, et al. (1997) / Ages chronostratigraphiques de la croûte océanique interpolés à partir des fichiers numériques de Müller & Li, et al. (1997). The ages are given in million years (Ma), according to the Geological Time Scale 2009 of the International Commission on Stratigraphy (ICS) / Les âges sont donnés en millions d'années (Ma), selon l'échelle des temps géologiques 2009 de la Commission internationale de Stratigraphie (ICS).

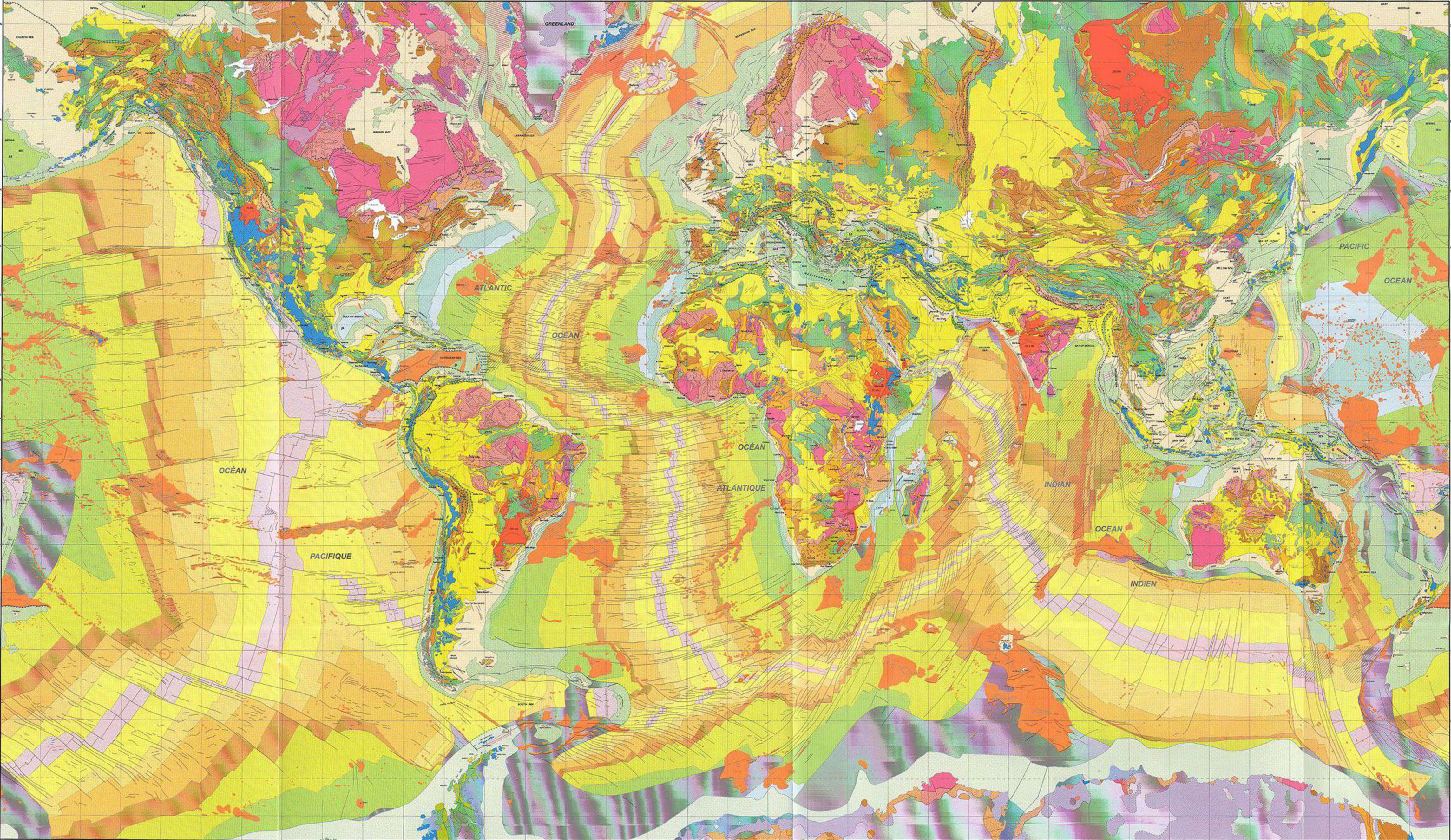
- Maps / Cartes**
 Geological Map of the World (1:25 M, 2nd edition 2009), CGMW-UNESCO.
 Geological Atlas of the World (1:10 M, 1994), CGMW-UNESCO.
 Plate Tectonics from Space (1:50 M, 2006), CGMW.
 International Geological Map of Africa (1:5 M, 1st edition 1999), CGMW-UNESCO.
 Géologie des Principaux Continents d'Afrique (1:10 M, 2006), BRGM.
 Geological Map of North America (1:5 M, 2nd edition 2000), CGMW-CPM DPM UNESCO.
 Geological Map of South America (1:5 M, 2nd edition 2000), CGMW-CPM DPM UNESCO.
 Mesozoic Map of South America (1:5 M, 2nd edition 2000), CGMW-CPM DPM UNESCO.
 Geological Map of Asia and Europe (1:5 M, 1997), Institute of Geology, Chinese Acad. Geol. Sci.
 Structural Map of Eastern Europe (1:2.5 M, 2008), CGMW.
 Geological Map of South and East Asia (1:5 M, 3rd edition 1998), CGMW-UNESCO.
 Geological Map of People's Republic of China (1:2.5 M, 2006), G. S. China.
 Geological Map of India (1:5 M, 1993), G. S. India.
 Tectonic Map of India and Adjacent Countries (1:5 M, 1998), unpubl. doc., G. S. India.
 Australia Geology (1:5 M, 1999), AGSO.
 Geological Map of Europe (1:5 M, 2nd edition 2000), BRGM-UNESCO.
 Geological Map of Land and Sea areas of Northern Europe (1:4 M, 2002), CGMW-CPM.
 Geological Base of the Middle East (1:5 M, 2nd edition 1993), CGMW, G. S. Iran.
 Geological Map of the Mediterranean area (1:10 M, 2006), CGMW.
 The Dynamic Plate World Map of Plate Tectonics, Earthquake Impact Centres and Plate Tectonics (2006), Smithsonian Institution, USGS, US Naval Research Laboratory.

Papers / Articles
 Müller & Li, 1997 - An updated digital model of plate tectonics, Geochemistry, Geophysics, Geodynamics, 4, 3-32.
 Bray & Lawrence, S., Swain, R. (1998) - Source rock maturity data indicate potential of Gannoh, 684 Geol. Soc. Lond., 152, 89-98.
 Buntz & Gaudin, 2004 - Occurrences de événements sur-faults subductifs, 4. Geol. Français, 17, 2: 203-229.
 Buntz & Roubin, 2004 - Derivation of Large Spineless Provinces of the past 200 million years.
 CGMW / CCGM 2009
 Map available at / Cette carte est disponible à : CGMW 77, rue Claude Bernard 75005 Paris, France www.cgmw.org e-mail: cgmw@club-internet.fr
 Citation de cette carte: Ph. Bouyasse et coll. - Carte Géologique du Monde à 1/50 M 2nd édition, 2 feuilles, CGMW, 2009.



The dotted circle line corresponds to the southern boundary (72° S) of the main map, in Mercator projection. The circle in pointillé correspond à la limite sud (72° S) de la carte principale, en projection Mercator.

With the support of / Avec le soutien de:
 planetearth
 brgm
 TOTAL



The geographic base map was taken from the WDB-II Program. Le fond géographique a été établi à partir du programme WDB-II.
 Projection systems used: 1) for the main map: spherical Mercator (scale 1:50M at equator); 2) for circum-polar areas: polar stereographic projection (scale 1:46 M).
 Systèmes de projection utilisés: 1) pour la carte principale: Mercator sphérique (l'échelle est de 1:50 M à l'équateur); 2) pour les zones circum-polaires: projection stéréographique polaire (échelle 1:46 M).
Hotspots
 I. Currently active hotspots, or hotspots whose ultimate known activity centres within the last million years or so.
 1. HA, HG, "Primary" hotspots i.e. assumed to correspond to a deep seated thermal plume (after Courtillot et al., 2003).
 2. Hb, Hc, Hc: Possible "primary" hotspots (bid.).
 3. H1, H34: Other "hotspots", i.e. assumed to have a relatively shallow mantle origin (upper/lower mantle transition zone, "hotline", passive lithosphere break-up, ... or whose deeper origin is yet questionable).
 II. eH1 & eH2: Hotspots whose extinction is much older.
 HA: Afar - HB: Se de Fiqueras - HC: Hawaii - HD: Iceland - HE: Louisville - HF: Reunion - HG: Tristan.
 HI: Galapagos - Hc: Kerguelen.
 H1: Anso seamount (anti) - H2: Accension - H3: Azores - H4: Bailey - H5: Bouvet - H6: Bowie/Kodiak smts - H7: Cameroon - H8: Canaries - H9: Cap Vert - H10: Caroline - H11: Comores - H12: Crozet - H13: Dufour/Ouellet/Maria - H14: Fernando de Noronha - H15: Mont Foundation - H16: Mont Pelion/Lord Howe Rise - H17: Hoggar - H18: Jan Mayen - H19: Juan de Fuca/Cobb - H20: Juan Fernandez/Saltillo - H21: Macdonald - H22: Marion - H23: Montserrat - H24: Pitcairn - H25: Rarotonga - H26: St Paul/Desventuradas - H27: Samoa - H28: San Féli/Desventuradas - H29: Socorro/Revolvingo - H30: Tahiti/Société H31: Tuamotus - H32: Taveuni - H33: Trindade/Martin Van - H34: Yellowstone.
 eH1: Great Meteor smt/New England smts - eH2: St. Helena.
 H1: Mont sous-marin (Mont) Arago - H2: Accension - H3: Apres - H4: Bailey - H5: Bouvet - H6: Bowie/Kodiak - H7: Cameroon - H8: Canaries - H9: Cap Vert - H10: Caroline - H11: Comores - H12: Crozet - H13: Dufour/Ouellet/Maria - H14: Fernando de Noronha - H15: Mont Foundation - H16: Mont Pelion/Lord Howe Rise - H17: Hoggar - H18: Jan Mayen - H19: Juan de Fuca/Cobb - H20: Juan Fernandez/Saltillo - H21: Macdonald - H22: Marion - H23: Montserrat - H24: Pitcairn - H25: Rarotonga - H26: St Paul/Desventuradas - H27: Samoa - H28: San Féli/Desventuradas - H29: Socorro/Revolvingo - H30: Tahiti/Société H31: Tuamotus - H32: Taveuni - H33: Trindade/Martin Van - H34: Yellowstone.
 eH1: Great Meteor/New England - eH2: St. Helena.

NOTICE
 The Explanatory Notes in English, French and Spanish are downloadable in pdf format at the CGMW website www.cgmw.org.
 The rectification of two errors in the map at the scale of 1:50 000 000 is given in pages 17, 18 and back cover of the Explanatory Notes.
 ISBN 978-2-917310-03-8